

CODE	Dn1	Dn2	S	D	L1	L2	L3	L	H1	H
12ETER3220	32	20	3	42	37,5	45	63,5	55	70	91
12ETER1163	110	63	5,8	140	83	68,5	156,5	144	150	220
12ETER1190	110	90	8,2	140	83	88,5	156,5	144	170	240
12ETER1263	125	63	5,8	159	88	68,5	174	157,5	162	241,5
12ETER1290	125	90	8,2	159	88	88,5	174	157,5	182	261,5
12ETER1211	125	110	10	159	88	88,5	174	157,5	182	261,5
12ETER1663	160	63	5,8	195	90	78,5	206	155	185	283
12ETER1690	160	90	8,2	195	90	83,5	206	155	190	288
12ETER1611	160	110	10	195	90	88,5	206	155	195	293
12ETER1612	160	125	11,4	195	90	93,5	206	155	200	298



**EIOFIT**

ITEM: **ETER**

DESC: TEE RIDOTTO ELETTRIFUSIONE REDUCING TEE WITH SPIGOT END PE100 SDR11 PFA/PN16



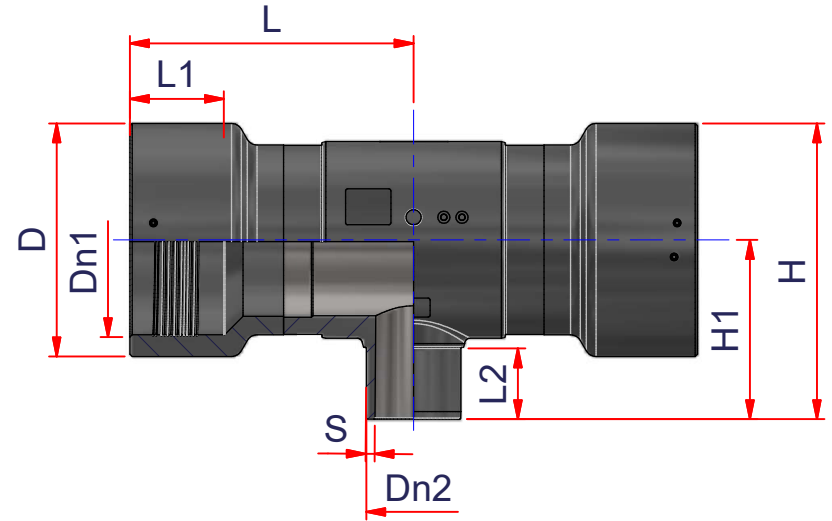
DRAWING No:  
**EL10146**

SHEET OF REV.  
**1 3 -5**

www.nupiindustriaitaliane.com - info@nupinet.com

All dimensions have to be considered in millimeters with 5% tolerance if not otherwise mentioned excluding values as per standard EN 1555 (gas) and/or EN 12201 (water)

CODE	Dn1	Dn2	S	D	L1	L2	L	H1	H
12ETER1890	180	90	8,2	225	93,5	84	358	197	309,5
12ETER1811	180	110	10	225	93,5	95	358	197	309,5
12ETER1812	180	125	11,4	225	93,5	100	358	205	317,5
12ETER1816	180	160	14,6	225	93,5	110	358	210	222,5
12ETER2063	200	63	5,7	240	108	70	383	187	307
12ETER2090	200	90	8,2	240	108	90	383	207	327
12ETER2011	200	110	10	240	108	87	383	207	327
12ETER2012	200	125	11,4	240	108	95	383	215	335
12ETER2016	200	160	14,6	240	108	103	383	223	343
12ETER2263	225	63	5,7	273,5	115	70	403	200	337
12ETER2290	225	90	8,2	273,5	115	90	403	217	354
12ETER2211	225	110	10	273,5	115	87	403	217	354
12ETER2212	225	125	11,4	273,5	115	95	403	225	362
12ETER2216	225	160	14,6	273,5	115	103	403	235	372
12ETER2218	225	180	16,4	273,5	115	110	403	235	372
12ETER2590	250	90	8,2	308	125	90	438	232	386
12ETER2511	250	110	10	308	125	116	438	258	412
12ETER2512	250	125	11,4	308	125	95	438	237	391
12ETER2516	250	160	14,6	308	125	105	438	247	401
12ETER2520	250	200	18,2	308	125	116	438	258	412



**EloFIT**

ITEM: **ETER**

DESC: TEE RODPTTA ELETTRISALDABILE  
ELECTROFUSION REDUCING TEE WITH  
SPIGOT END PE100 SDR11 PFA/PN16

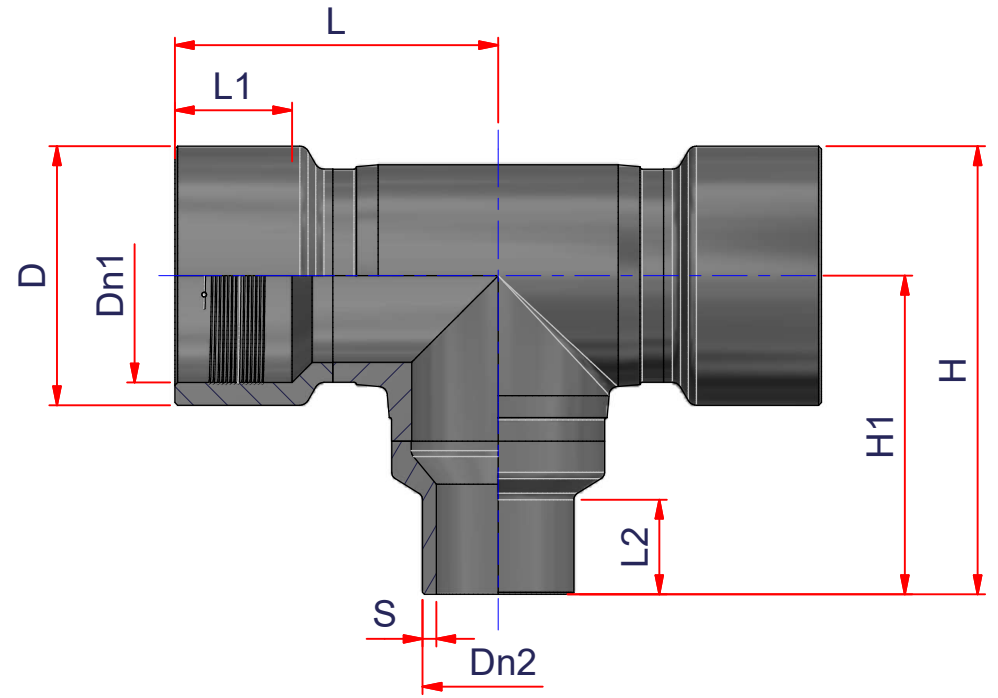


DRAWING No:  
**EL10146**

SHEET OF REV.  
2 3 -5

www.nupiindustriaitaliane.com - info@nupinet.com

All dimensions have to be considered in millimeters with 5% tolerance if not otherwise mentioned excluding values as per standard EN 1555 (gas) and/or EN 12201 (water)



CODE	Dn1	Dn2	S	D	L1	L2	L3	L	H1	H
12ETER2518	250	180	16,4	308	125	103	-	405	360	514



**EloFIT**

ITEM: **ETER**

DESC: TEE RIDOTTA ELETROSALDABILE  
ELECTROFUSION REDUCING TEE WITH  
SPIGOT END PE100 SDR11 PFA/PN16



DRAWING No:  
**EL10146**

SHEET OF REV.  
**3 3 -5**

www.nupiindustriaitaliane.com - info@nupinet.com

All dimensions have to be considered in millimeters with 5% tolerance if not otherwise mentioned excluding values as per standard EN 1555 (gas) and/or EN 12201 (water)